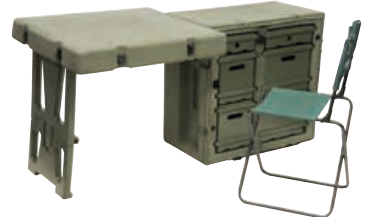


SPECIALTY PRODUCTS

Our specialty products are well engineered portable workspace solutions. These specialty products range from portable desks that set up in minutes to storage chests with metal drawers and dividers to keep all your supplies safe and organised. For protecting personal gear, our footlockers and trunklockers are lightweight and lockable. Whatever your need, whatever the environment, we have a durable solution to keep the job moving along.

SINGLE FIELD DESK FD3121-0000-130



DOUBLE DUTY FIELD DESK FD3429-0000-130



CAT. NO.	SINGLE FIELD DESK FD3121-0000-130	DOUBLE DUTY FIELD DESK FD3429-0000-130
COLLAPSED FORM	77.9 x 53.3 x 72.4 cm (30.70" x 21.00" x 28.50")	86.4 x 72.4 x 63.2 cm (34.00" x 28.50" x 24.90")
EXTENDED FORM	156 x 72.4 x 72.4 cm (61.40" x 28.50" x 28.50")	259.1 x 72.4 x 72.4 cm (102.00" x 28.50" x 28.50")
WEIGHT*	37 kg (81.3 lbs.)	45.5 kg (100 lbs.)

- + FEATURES**
- 1 Large work surface, chair, and drawers
 - 6 Drawers: 2 shallow (padlock for extra security), 2 deep, 2 file sizes
 - 1 Chair: load rated to 300 lbs. (136 kg each)
 - Airtight and watertight
- + APPLICATION EXAMPLES**
- Command centers, Construction sites, Emergency aid shelters
 - 2 Large desk surfaces, with rolling casters
 - 6 Drawers: 2 shallow (padlock for extra security), 2 deep, 2 file sizes
 - 2 Casters
 - 2 Chairs: Load rated to 300 lbs. (136 kg each)
 - Airtight and watertight
 - Command centers, Construction sites, Emergency aid shelters

TRUNKLOCKER TL3619-0000-130

FOOTLOCKER FT3317-0000-130

MEDCHEST 3 MC3000-3018-130

MEDCHEST 4 DRAWER MC4100-0040-130

MEDCHEST 8 DRAWER MC8100-0080-130



CAT. NO.	TRUNKLOCKER TL3619-0000-130	FOOTLOCKER FT3317-0000-130	MEDCHEST 3 MC3000-3018-130	MEDCHEST 4 DRAWER MC4100-0040-130	MEDCHEST 8 DRAWER MC8100-0080-130
INTERIOR DIMENSIONS	83.5 x 38.1 x 45.1 cm (32.88" x 15.00" x 17.75")	73.6 x 35.5 x 38.1 cm (29.00" x 14.00" x 15.00")	76.2 x 45.7 x 27.9 cm (30.00" x 18.00" x 11.00")	N/A	N/A
EXTERIOR DIMENSIONS	92.1 x 47 x 49.7 cm (36.27" x 18.50" x 19.56")	83.8 x 43.2 x 43.2 cm (33.00" x 17.00" x 17.00")	83.2 x 53 x 32 cm (32.75" x 20.87" x 12.61")	83.2 x 53 x 32 cm (32.75" x 20.87" x 12.61")	83.2 x 53 x 32 cm (32.75" x 20.87" x 12.61")
WEIGHT*	11.79 kg (26 lbs.)	12.25 kg (27 lbs.)	11.34 kg (25 lbs.)	29.03 kg (64 lbs.)	29.03 kg (64 lbs.)

- + FEATURES**
- Storage locker
 - Extra-deep storage cavity
 - Two press & pull latches
 - Injection moulded outer shell
 - Two organisation trays
 - Moulded-in stacking ribs
 - Water resistant
 - 2 wheels
 - 2 black trays
 - Spring loaded butterfly latches
 - Airtight and watertight
 - Storage chest
 - 2 wheels
 - Made from fire retardant material
 - Spring loaded butterfly latches
 - 3x5" (7.6 x 12.7cm) Card holder
 - Airtight and watertight
 - Four-drawer case with full extension sliding drawers
 - 2 wheels
 - Spring loaded butterfly latches
 - Full-extension ball-bearing slides
 - Made from fire retardant material
 - Airtight and watertight
 - Customisable divider system
 - Eight-drawer case with full extension sliding drawers
 - 2 wheels
 - Spring loaded butterfly latches
 - Full-extension ball-bearing slides
 - Made from fire retardant material
 - Airtight and watertight
 - Customisable divider system
 - One lockable drawer
 - Removable stainless-steel work tray
 - Comfort Grip Handles™
 - Emergency response supplies and medicines
- + APPLICATION EXAMPLES**
- General storage, Tool storage, Emergency preparedness supplies
 - Command centers, Construction sites, Emergency aid shelters
 - Emergency response supplies, Medicines, Maintenance/Repair/Operations Parts
 - Emergency response supplies and medicines

* All dimensions and weights are approximate. All specialty cases are available exclusively in OD green.

Wheeled Case

BUILT TO PROTECT.

LEARN MORE ABOUT + OUR PRODUCTS



www.peli.com



AVAILABLE IN 18 LANGUAGES!

www.pelicatalogue.com



www.peli.com/webinars



EMEA

EUROPE, MIDDLE EAST & AFRICA HEADQUARTERS
PELI PRODUCTS, S.L.U.
C/ Provença, 388 Planta 7
08025 • Barcelona, Spain
Tel +34 934 674 999
Fax +34 934 877 393
www.peli.com

FRANCE
PELI PRODUCTS FRANCE S.A.S.
20/22 Rue des Petits Hôtels
75010 Paris, France
Tel +33 (0)1 44 83 95 63
Fax +33 (0)1 44 83 95 68
www.peli.com

UK
PELI HARDIGG UK
Unit 4, Brookfield Industrial Estate
Leacon Road
Ashford Kent TN23 4TU
Tel + 44 (0) 1233 895 895
Fax +44 (0) 1233 895 899
www.peli.com

U.S.A.

U.S.A. & GLOBAL HEADQUARTERS
23215 Early Avenue
Torrance, CA 90505 USA
Tel 310.326.4700
800.473.5422 (Outside CA)
Fax 310.326.3311
www.pelican.com

GERMANY
PELI PRODUCTS GERMANY GmbH
Düsseldorf Kö-Bogen
Business Center
Königsallee 2b, 5th Floor
40212 Düsseldorf, Germany
Tel +49 (0) 211 882 42 401
Fax +49 (0) 211 882 42 200
www.peli.com

UAE
PELICAN PRODUCTS FZE
JAFZA One Building A office 1511/1512
Jebel Ali Free Zone gate 5
P.O.Box 261008
Dubai – United Arab Emirates
Tel: +971 4 8876550
Fax: +971 4 8876549
www.pelican.com
www.peli.com

PELICAN HARDIGG
147 North Main Street
South Deerfield, MA 01373
Tel (800) 542 73 44
Fax (413) 665 8330
www.pelican.com

* We also have offices in Canada, Japan, China, Australia, South Korea and India

ROTO MOULDED CASES - PELI 1 YEAR LIMITED GUARANTEE

Peli Products, S.L.U. ("Peli") guarantees its rotationally moulded containers will be free of defects in materials and workmanship for a period of one year from the date of purchase. This warranty does not cover any associated hardware including closure hardware, retractable handles, wheels, and fasteners, which Peli warrants against defects in materials and workmanship for a period of 90 days from the date of purchase. This warranty applies only to the original purchaser and is not transferable. To the extent permitted by law: Peli's liability is limited to the case and not its contents. All warranty claims of any nature are barred if the container has been altered, damaged or in any way physically changed, or subjected to abuse, misuse, negligence or accident.

For complete warranty details, see www.peli.com/warranty



Follow us on:

©2017 Peli Products, S.L.U. All trademarks are registered and/or unregistered trademarks of Pelican Products, Inc., its subsidiaries and/or affiliates. All details included in this catalogue are correct when printed but for most updated information please visit www.peli.com and www.pelicatalogue.com.
Part No. 0030-RTP-001E MAR 17



Check out our 40 Years of Protection video:



PELI-HARDIGG™ ROTO PACK BROCHURE



STANDARISED SOLUTIONS - SINGLE LID CONTAINERS - RACKMOUNT CASES - SPECIALTY PRODUCTS



LARGE, X-LARGE, XX-LARGE RUGGEDISED SHIPPING CASES

Transport and protect big equipment in our Large, X-Large, or XX-Large Ruggedised Shipping Cases. These cases are lightweight, shockproof, watertight, dustproof, heat and chemical-resistant, which makes them extremely tough. Ultimate protection that will move your equipment from point A to point B without a scratch.



BLACKBOX™ RACK MOUNT CASES

These lightweight, compact, and double ended cases offer light to medium duty protection and boast significantly better light duty shock performance than the competition. The use of recycled materials in the shell and a sturdy steel frame offer great value while upholding Peli-Hardigg's industry-leading standards. When you need to be cost-conscious but can't sacrifice performance, BlackBox is the answer.

LARGE RUGGEDISED SHIPPING CASES



X-LARGE RUGGEDISED SHIPPING CASES



X-LARGE RUGGEDISED SHIPPING CASES




XX-LARGE RUGGEDISED SHIPPING CASES




	LARGE RUGGEDISED SHIPPING CASES				X-LARGE RUGGEDISED SHIPPING CASES			XX-LARGE RUGGEDISED SHIPPING CASES		
CAT. NO.	AL1616-0505-110	AL2013-0903-110	AL2624-1805-110	AL3018-1505-110	AL3418-1005-110	AL4024-1305-110	AL5415-1026-110	AL6912-1003-110	AL5424-2306-110	AL3834-1617-110
INTERIOR DIMENSIONS	40 x 40.3 x 26.8 cm (15.75" x 15.88" x 10.54")	50.5 x 33 x 31.2 cm (19.90" x 13.00" x 12.30")	67 x 60.9 x 58.1 cm (26.40" x 24.00" x 22.90")	75.6 x 45.4 x 51.1 cm (29.75" x 17.87" x 20.12")	86.8 x 45.4 x 39 cm (34.18" x 17.87" x 15.37")	101.2 x 61.7 x 45.7 cm (39.87" x 24.31" x 18.00")	138.7 x 40.3 x 91.1 cm (54.62" x 15.88" x 35.88")	176.1 x 30.5 x 35.8 cm (69.37" x 12.00" x 14.09")	136.8 x 60.8 x 73.3 cm (53.87" x 23.93" x 28.87")	96.8 x 86.6 x 83.8 cm (38.12" x 34.12" x 33.00")
EXTERIOR DIMENSIONS	47.6 x 48 x 31 cm (18.75" x 18.88" x 12.19")	58.1 x 40.6 x 35.3 cm (22.90" x 16.00" x 13.90")	73.8 x 68.6 x 67.6 cm (29.10" x 27.00" x 26.60")	83.2 x 53 x 55.7 cm (32.75" x 20.87" x 21.93")	94.4 x 53 x 44 cm (37.18" x 20.87" x 17.31")	108.8 x 69.3 x 51.3 cm (42.87" x 27.31" x 20.19")	144.9 x 47.9 x 100.6 cm (57.06" x 18.87" x 39.62")	183.8 x 38.1 x 41.4 cm (72.37" x 15.00" x 16.28")	144.4 x 68.4 x 85.7 cm (56.87" x 26.93" x 33.75")	104.4 x 94.3 x 98.6 cm (41.12" x 37.12" x 38.82")
LID DEPTH*	13 cm (5.12")	7.6 cm (3.00")	12.9 cm (5.10")	13.3 cm (5.25")	13.3 cm (5.30")	13.3 cm (5.25")	65.7 cm (25.88")	9.1 cm (3.60")	15.5 cm (6.12")	43.8 cm (17.25")
BOTTOM DEPTH*	13.8 cm (5.42")	23.5 cm (9.30")	45.2 cm (17.80")	37.8 cm (14.87")	25.7 cm (10.10")	32.4 cm (12.75")	25.4 cm (10.00")	26.6 cm (10.49")	57.8 cm (22.75")	40 cm (15.75")
WEIGHT	6.6 kg (14.5 lbs.)	7.6 kg (16.8 lbs.)	17.5 kg (38.5 lbs.)	14.4 kg (31.8 lbs.)	13.9 kg (30.6 lbs.)	22.8 kg (50.2 lbs.)	44.54 kg (98.2 lbs.)	19.1 kg (42 lbs.)	47.3 kg (104.3 lbs.)	39.2 kg (86.4 lbs.)

+ FEATURES: Comfort Grip Handles™ / Reinforced corners and edges for additional impact protection / Moulded-in ribs and corrugations for secure, non-slip stacking, columnar strength and added protection / Positive anti-shear locks, which prevent lid separation after impact / Recessed hardware for extra protection

+ APPLICATION EXAMPLES: Trade show support materials, shipping, portable general storage

 Wheeled Case
(note: AL5415-1026-110 includes 4 wheels)

 Forklift Skidrunner (one-piece moulded skid-runners provide clearance for forklift tines and pallet jacks)

- 61 cm (24") Rugged steel rack frame with 10-32 threads designed to meet ANSI/EIA 310-C
- Shock mounts provide 5.1 cm (2") of sway space to isolate equipment
- Rack designed for applications up to 45 kg (100 lbs.) of equipment with a typical fragility rating of 40-80 G.
- 5.1 cm (2") front lid and 12.7 cm (5") back lid with edge casters

BLACKBOX™ RACK MOUNT CASES



BB0090-0000-110E BB0110-0000-110E BB0140-0000-110E



CAT. NO.	BB0030-0000-110E	BB0040-0000-110E	BB0050-0000-110E	BB0070-0000-110E	BB0090-0000-110E	BB0110-0000-110E	BB0140-0000-110E
U SIZE	3U	4U	5U	7U	9U	11U	14U
RACK HEIGHT*	13.3 cm (5.25")	17.8 cm (7")	22.2 cm (8.75")	31.1 cm (12.25")	40 cm (15.75")	48.9 cm (19.25")	62.2 cm (24.50")
RACK LENGTH*	61 cm (24")	61 cm (24")	61 cm (24")	61 cm (24")	61 cm (24")	61 cm (24")	61 cm (24")
RACK WIDTH*	48.3 cm (19")	48.3 cm (19")	48.3 cm (19")	48.3 cm (19")	48.3 cm (19")	48.3 cm (19")	48.3 cm (19")
LID I.D.* FRONT/BACK¹	5.6 / 13.2 cm (2.20 / 5.20")	5.6 / 13.2 cm (2.20 / 5.20")	5.6 / 13.2 cm (2.20 / 5.20")	5.6 / 13.2 cm (2.20 / 5.20")	5.6 / 13.2 cm (2.20 / 5.20")	5.6 / 13.2 cm (2.20 / 5.20")	5.6 / 13.2 cm (2.20 / 5.20")
LENGTH* O.D.²	97.8 cm (38.50")	97.8 cm (38.50")	97.8 cm (38.50")	97.8 cm (38.50")	97.8 cm (38.50")	97.8 cm (38.50")	97.8 cm (38.50")
WIDTH* O.D.	62.5 cm (24.60")	62.5 cm (24.60")	62.5 cm (24.60")	62.5 cm (24.60")	62.5 cm (24.60")	62.5 cm (24.60")	62.5 cm (24.60")
HEIGHT* O.D.³	28.9 cm (11.4")	33.3 cm (13.10")	37.8 cm (14.90")	46.7 cm (18.40")	55.6 cm (21.90")	64.5 cm (25.40")	77.7 cm (30.60")
WEIGHT*	19.05 kg / (42 lbs.)	21.32 kg / (47 lbs.)	21.77 kg / (48 lbs.)	23.13 kg / (51 lbs.)	25.4 kg / (56 lbs.)	27.22 kg / (60 lbs.)	29.94 kg / (66 lbs.)

+ FEATURES: Engineered racks provide a secure and mobile electronics enclosure / 2 wheels / Lightweight and compact / Shock mounts provide 50 mm (2") of sway space to isolate equipment / Moulded-in rib design provides secure stacking and interlock / Patented wide-design / Comfort Grip Handles™ make lifting easy / Black hardware is long-lasting and fastens securely

+ APPLICATION EXAMPLES: Audio/Video recording and processing systems / Satellite communication systems / Radio communication systems / Seismic data recording instrumentation / Climate data collection

1 - Lid Outside Dimension (O.D.) = Lid I.D. plus 1.3" (3.3 cm) on 5.2" (13.2 cm) lids and plus 1.1" (2.8 cm) on 2.2" (5.6 cm)
2 - Length includes stiffening ribs
3 - Height excludes .4" (1.1 cm) stacking ribs

* All dimensions are approximate. All BlackBox™ rackmount cases are available exclusively in black.

 Wheeled Case